

T [ ǎ^ | Á € € - EXP  
Ú [ ɔə^ | Á ^ | Á ɔə Source

$$U_{\zeta}^{\dagger} \chi \tilde{a}_{\zeta}$$
[illegible][illegible]

W<sup>•</sup>^!ÁÓ^}^æ

[illegible]

The Model 2020-EXP is a split chassis design that has a removable Control/Cleanup module and a separate removable pump module that can be used together or independently. The split design allows the overall weight of the unit to be distributed for users to easily carry inside of shelters or locations that are difficult to access. All modules can be stored for shipment inside of the provided transport case that has a telescopic handle and wheels.

[illegible]

Ùæ åæåÁ^æ' !^•

► Ùcæ åæåÁ30ĂŠÚT ÁO Á35ÁÚÙŒ

► Pressure or Vacuum mode for pump module

► Condensate/purge valving for moisture removal

► Automatic purge frequencies

► [ɔ] [ ɔ̌ ǎ ə ^ á ] [ ʊ ] c ʰ a ʰ a b b • c a ʰ ^ á | ^ • • ^ | ^ á ^ \* ^ | æ | with pressure gauge

►P<sup>v</sup>! \* ^ Á. ã&@

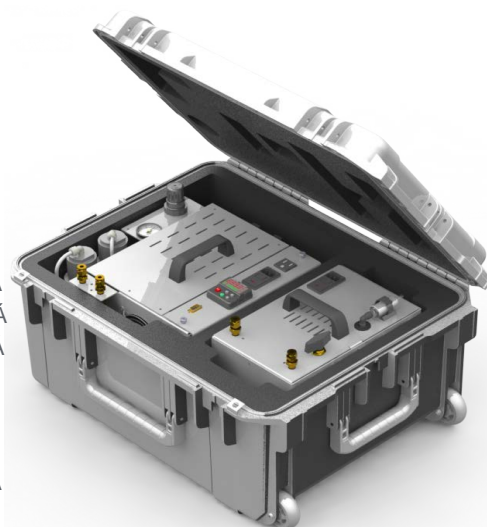
►  $Qc^{\wedge} \{ \} \text{ae} \dot{A}^{\wedge} \{ \} \{ \wedge \text{ae} \dot{a} \} \dot{A}^{\circ} |^{\wedge} \wedge |$

►T^ãã&aãc!•Á!Á{ [caÁ-ÁNOx,PUÊPUÊUÊUÊPÙ

- ▶ Rugged top mounted carrying handles

- ▶ Dew point - Less than  $-20^{\circ}\text{C}$

▶ 1/4" outlet ports



U] cā } æ/ð^ æč !^•

CO Oxidizer

Pydrocarbon/CO Oxidizer

Ö^, ÁÚ ā áQāæf :Á

CO2 Scrubber

1 x Ethernet: 10/100Base-T 1 x

RS232 (300-115,200 baud)

## MODBUS Protocol Support

ÙÚÒÔØÖ/ΩΉÙ

Ù| ^&ã&æñ } • Á ˇ à ò &ó / & @ \* ^ Á ã @ ˇ ó / ç ^

OEÜÄÜWOŠQY

NO, NO<sub>x</sub>, NO<sub>2</sub>, O<sub>3</sub>, SO<sub>2</sub>, H<sub>2</sub>S<0.025ppb,

0,05 mg/m<sup>3</sup> de SO<sub>2</sub>, NO<sub>x</sub>, NO<sub>2</sub>, O<sub>3</sub>, SO<sub>2</sub>, H<sub>2</sub>S, NH<sub>3</sub> e 0,02 mg/m<sup>3</sup> de CO.

Uçay aaaa' } aã aõ P^ ai[ &aà ] ÁÁÉÁ ] à,  
Internal P Ó&ææ çÁ  
[ çãã ^!  
CO < 5 ppb

T ÒÔP ÕÕ ÔÕ

P^ä @Y ãc@Ö^] c@ 11Ä/Ë27.9Ä/ DÄ7Ä/Ë43.1Ä/ DÄ1EÄ/Ä  
53.3Ä/ D

30A•AF3.6Á\* Dmodules in case 15 lbs  
(13.6 kg) pump module 10 lbs  
(13.6 kg) Control/Cleanup module 40 lbs  
(13.6 kg) w/HC Oxidizer

òšòôvüøøš

Útca áráÁ 98-132 VAC, 50/60HZ

U| ǣ } æ FJÎ ÈĜ | ÁØËÊǺ €Ð €Á: