

TECHNOLOGY-EXP Source

Overview

The Model 2020-EXP is a split chassis design that has a removable Control/Cleanup module and a separate removable pump module that can be used together or independently. The split design allows the overall weight of the unit to be distributed for users to easily carry inside of shelters or locations that are difficult to access. All modules can be stored for shipment inside of the provided transport case that has a telescopic handle and wheels.

The Model 2020-EXP is a split chassis design that has a removable Control/Cleanup module and a separate removable pump module that can be used together or independently. The split design allows the overall weight of the unit to be distributed for users to easily carry inside of shelters or locations that are difficult to access. All modules can be stored for shipment inside of the provided transport case that has a telescopic handle and wheels.

Specifications

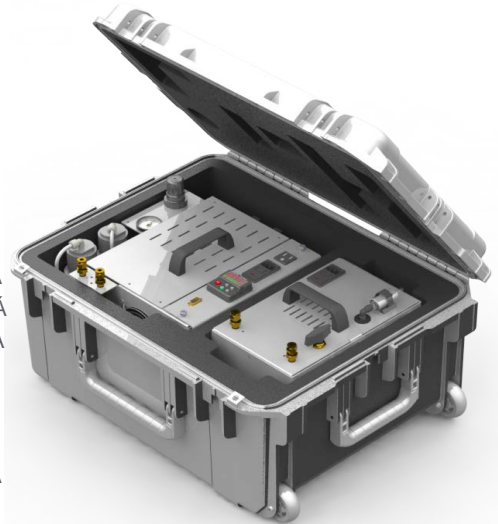
The Model 2020-EXP is a split chassis design that has a removable Control/Cleanup module and a separate removable pump module that can be used together or independently. The split design allows the overall weight of the unit to be distributed for users to easily carry inside of shelters or locations that are difficult to access. All modules can be stored for shipment inside of the provided transport case that has a telescopic handle and wheels.

The Model 2020-EXP is a split chassis design that has a removable Control/Cleanup module and a separate removable pump module that can be used together or independently. The split design allows the overall weight of the unit to be distributed for users to easily carry inside of shelters or locations that are difficult to access. All modules can be stored for shipment inside of the provided transport case that has a telescopic handle and wheels.

The Model 2020-EXP is a split chassis design that has a removable Control/Cleanup module and a separate removable pump module that can be used together or independently. The split design allows the overall weight of the unit to be distributed for users to easily carry inside of shelters or locations that are difficult to access. All modules can be stored for shipment inside of the provided transport case that has a telescopic handle and wheels.

Key Features

- Pressure or Vacuum mode for pump module
- Condensate/purge valving for moisture removal
- Automatic purge frequencies
- Includes optional pressure gauge with pressure gauge
- Rugged top mounted carrying handles



Options

- Hydrocarbon Oxidizer
- Carbon Monoxide Oxidizer
- Ethernet: 10/100Base-T
- RS232 (300-115,200 baud)
- MODBUS Protocol Support

Applications

The Model 2020-EXP is a split chassis design that has a removable Control/Cleanup module and a separate removable pump module that can be used together or independently. The split design allows the overall weight of the unit to be distributed for users to easily carry inside of shelters or locations that are difficult to access. All modules can be stored for shipment inside of the provided transport case that has a telescopic handle and wheels.

Specifications

Pressure or Vacuum mode for pump module	Pump module flow rate (25 ft³/min)
Condensate/purge valving for moisture removal	Pump module flow rate (21 ft³/min) at 21 ft³/min
Automatic purge frequencies	Operating pressure (psi)
Includes optional pressure gauge with pressure gauge	Pump module flow rate (21 ft³/min) at 21 ft³/min
Rugged top mounted carrying handles	Operating pressure (psi)
	CO < 5 ppb
	11 ft³/min @ 2.9 ft³/min @ 3.1 ft³/min @
	21 ft³/min @ 3.3 ft³/min @
	30 ft³/min @ 3.6 ft³/min @
	15 lbs (13.6 kg) pump module 10 lbs (13.6 kg) Control/Cleanup module 40 lbs (13.6 kg) w/HC Oxidizer

Dimensions

Pressure or Vacuum mode for pump module	Dimensions (L x W x H)
Condensate/purge valving for moisture removal	Dimensions (L x W x H)